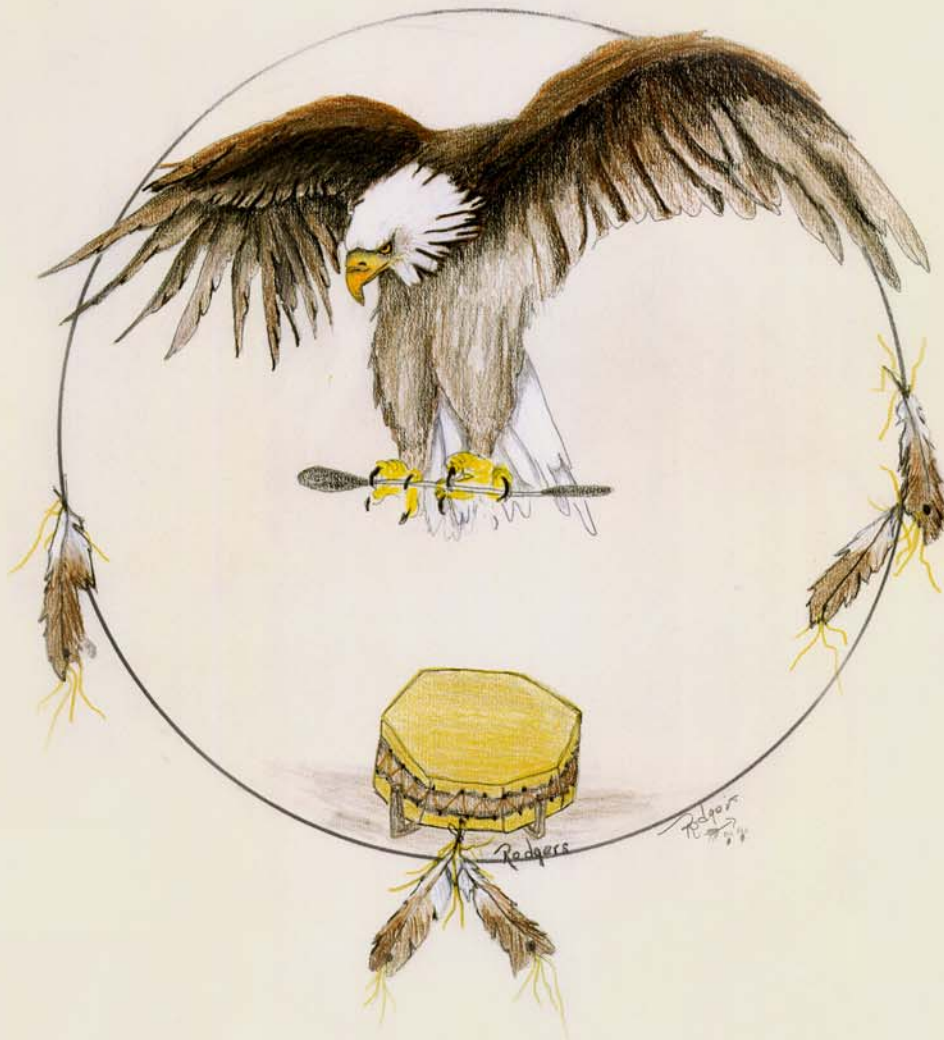




# Portrait of a People 2005 A Statistical Snapshot



This page intentionally left blank for printing purposes.

# Portrait of A People 2005

## And the Survey says....

The following statistics, maps and graphs are based on a survey completed by adult tribal members in the autumn of 2004. This information provides merely a numerical glimpse at the lives of tribal members. In addition, the information provides an opportunity to see how tribal members view the services that the Siletz Tribal Government provides. It is important to emphasize that survey results, while numerically representative of the tribal membership as a whole, are only representative for the distinct moment in time that the survey was completed and analyzed.

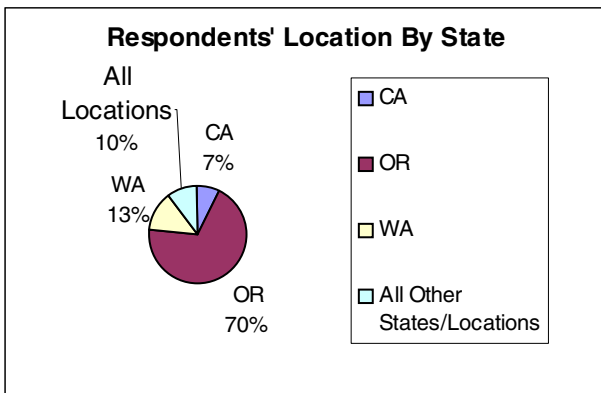
### Was the survey representative of the Tribal population?

When comparing the survey return rate in general (835 surveys completed) to the adult population (2573 in August 2004) the accuracy of the survey responses representing the population as a whole can be estimated to be accurate within +/- 3%. Additionally, information within the survey, such as the breakdown of tribal members' locations, is helpful in determining the representation of the Tribe within the returns of the survey. For instance, the location of adult tribal members breaks down as follows:

Location	# of Adults in Tribe as a Whole	% of Total by Location	% of Survey Respondents (from these areas)	Difference
Oregon	1741	67.64%	69.94%	+2.30%
Washington	300	11.66%	12.93%	+1.27%
California	213	8.28%	7.07%	-1.21%
All other states	316	12.28%	10.18%	-2.10%
Outside US	4	0.15%	0.12%	-0.03%

Table A: Location by State

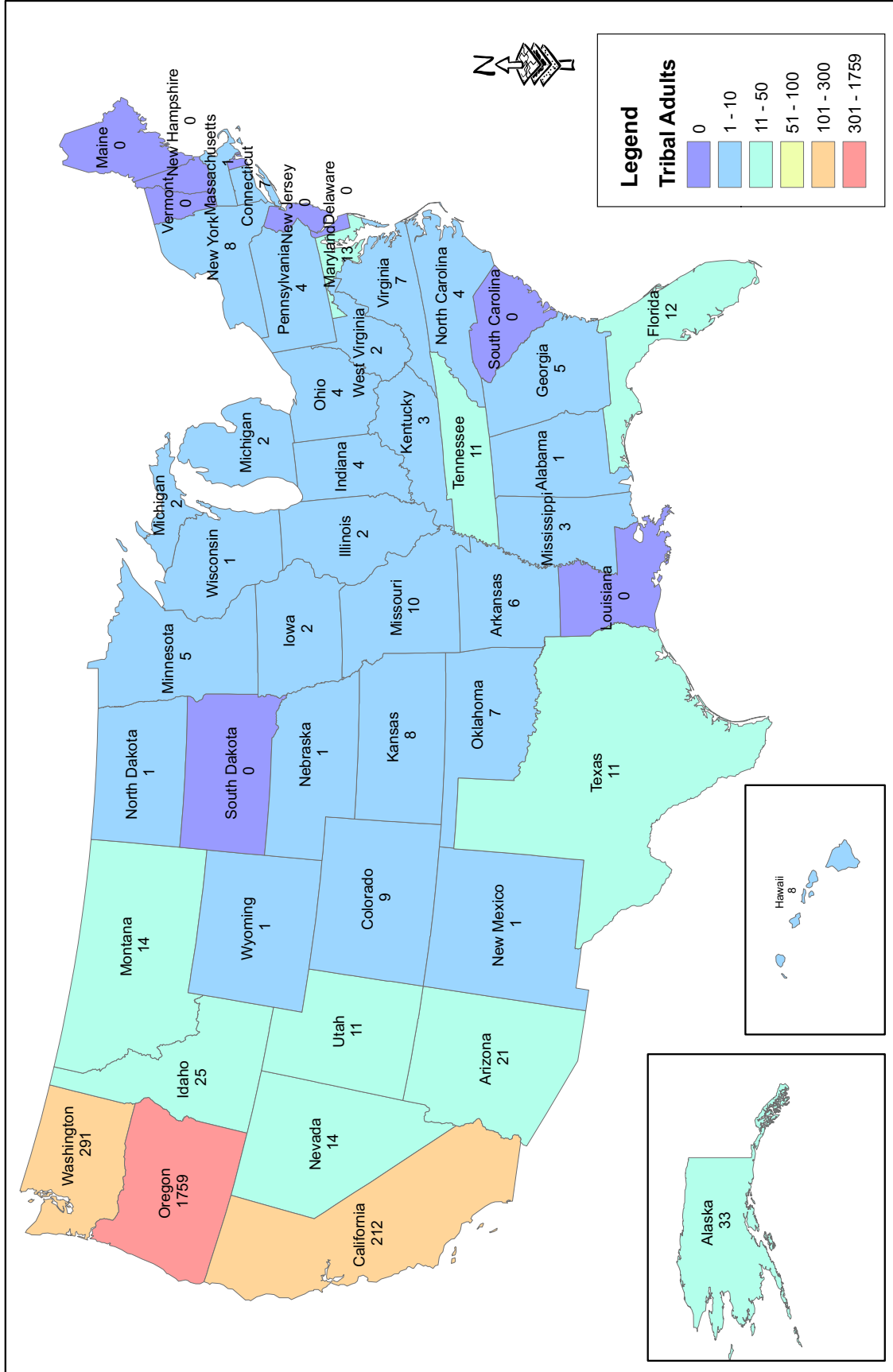
The percent of tribal members who responded to the survey from each state is approximately the same as the percent of all members who live in each state.



Graph 1: Respondents Location by State

70% of respondents reside in Oregon, 13% in Washington, 7% in California and the other 10% reside outside of these three states. Tribal members are located in almost every state, as well as several places around the world.

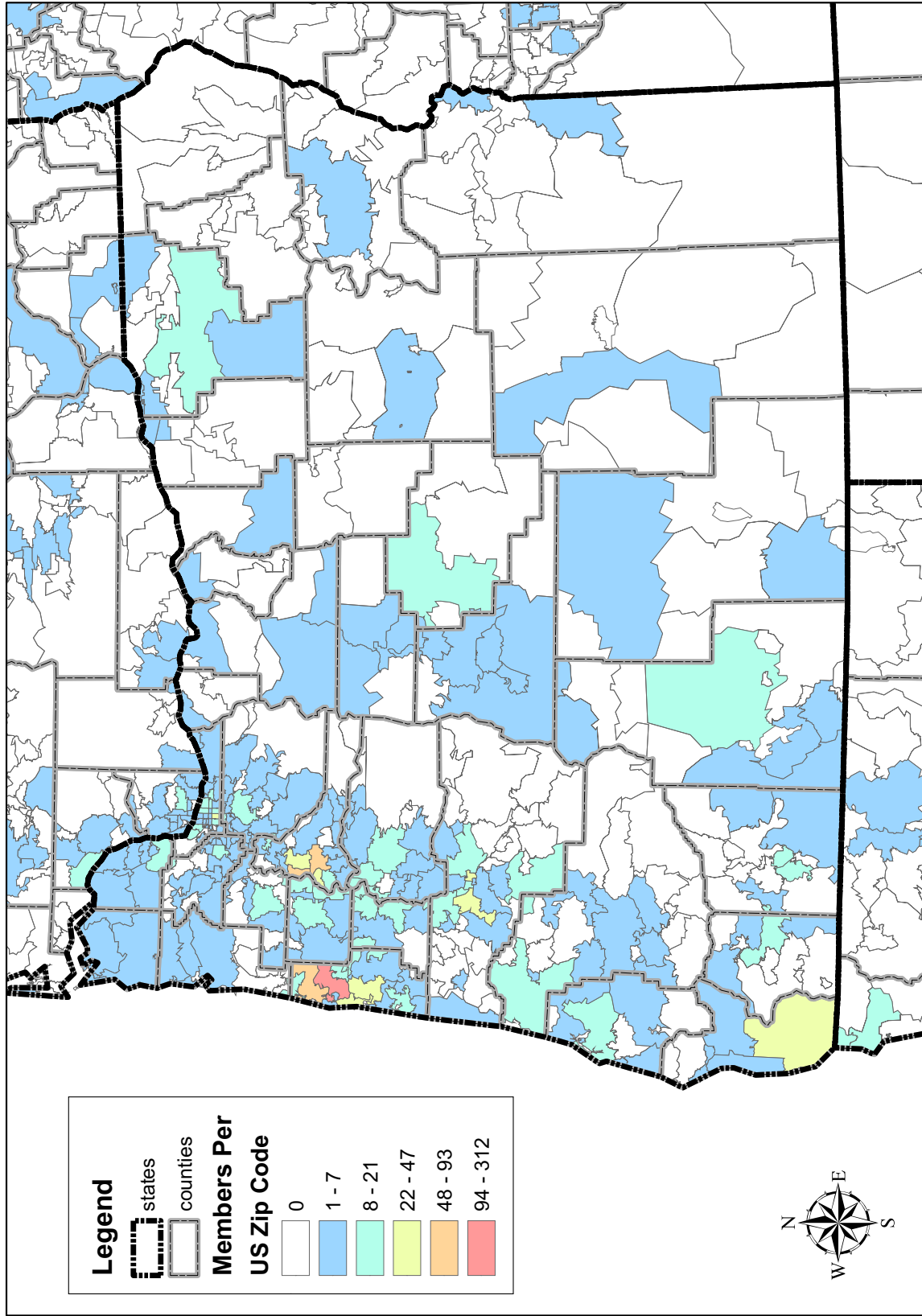
# Siletz Tribe Adults 2004 Population by State



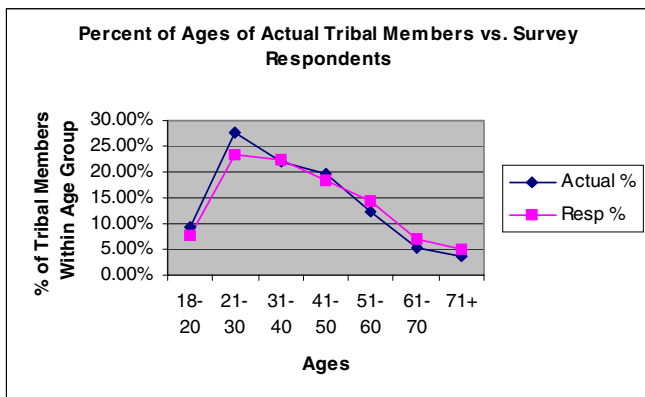




Siletz Tribe Adult Population  
Total Number by Zip Code



# What did the survey picture look like?

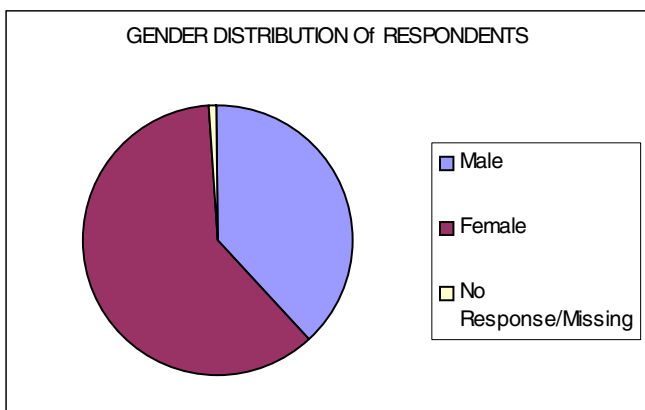
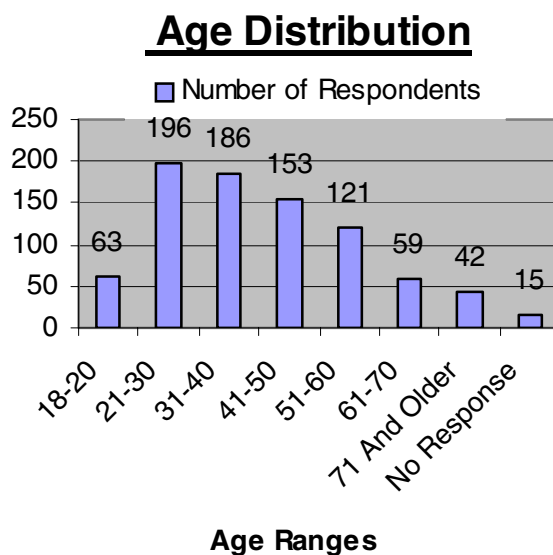


Graph 2: Percent of Ages of Actual Tribal Members vs. Survey Respondents

The percent of tribal members who responded to the survey in each age category is approximately the same as the percent of all members in each age category.

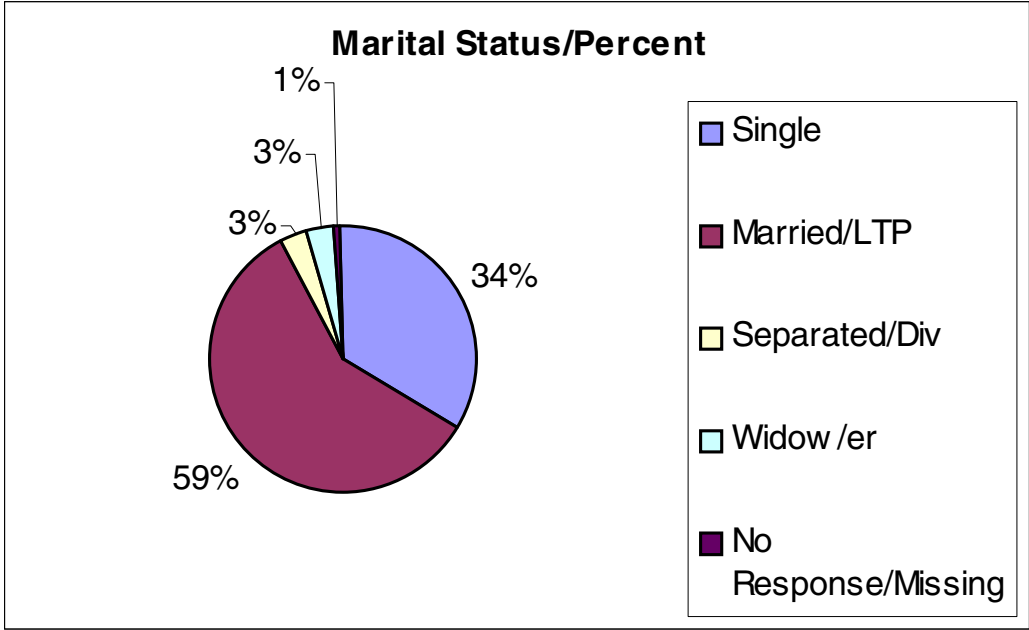
Graph 3: Age Distribution

This graph shows how many tribal members from each age group responded to the survey. The majority were between age 21 – 60 years old.



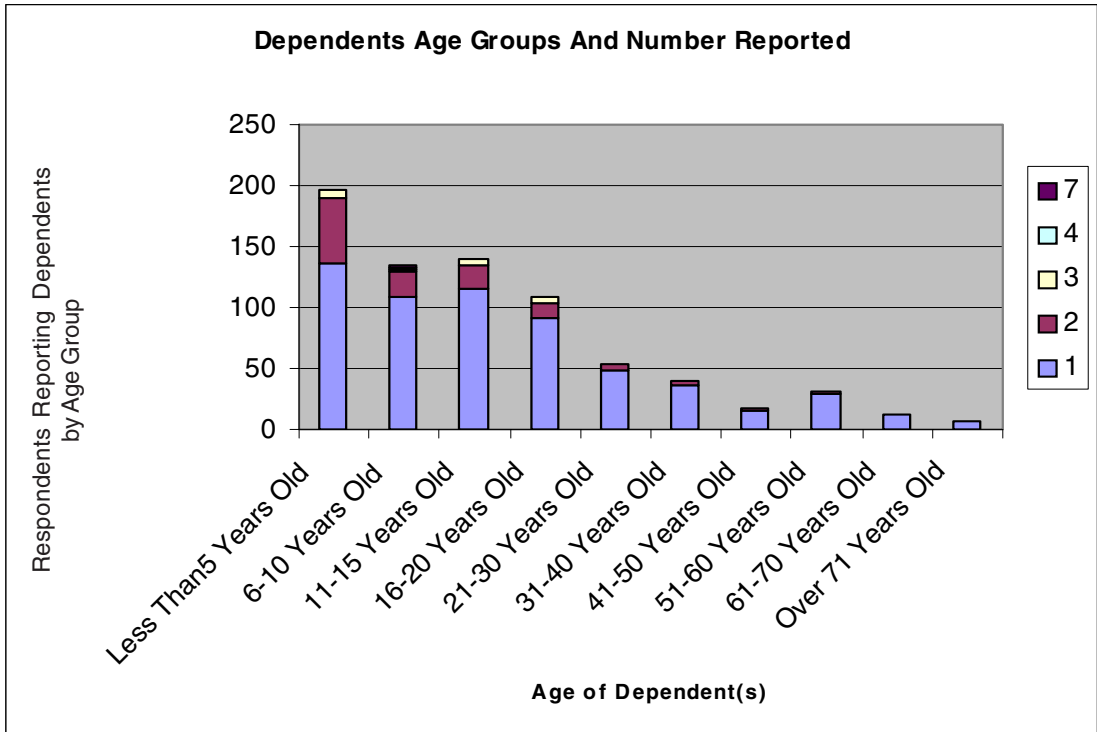
Graph 4: Gender Distribution of Respondents

This graph shows how many female and male tribal members responded to the survey. 61% were woman and 38% were men. 1% did not respond to this question.



Graph 5: Marital Status/Percent

This graph represents the marital status of tribal members who responded to the survey. 34% were single, 59% were married or had long-term partners, 3% were separated or divorced, 3% were widowed, and 1% did not respond to this question.



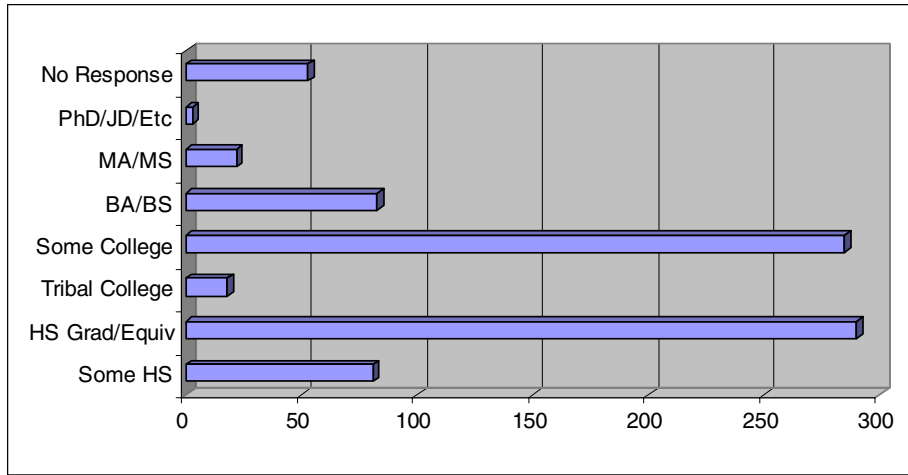
Graph 6: Dependents Age Groups And Number Reported

This graph represents the age and number of dependents reported by tribal members, 740 in all. The majority, 197, of those who reported having dependents had children under 5.





## FORMAL EDUCATION LEVEL

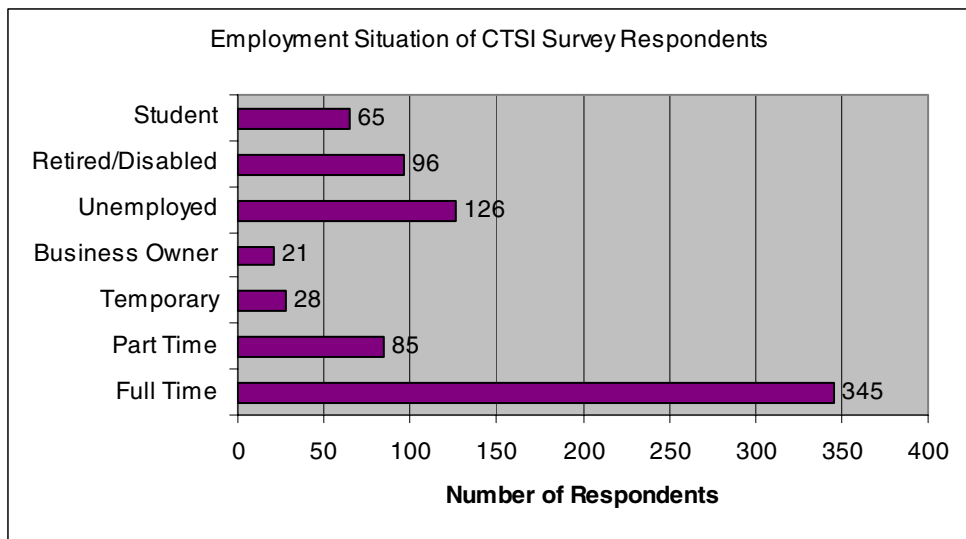
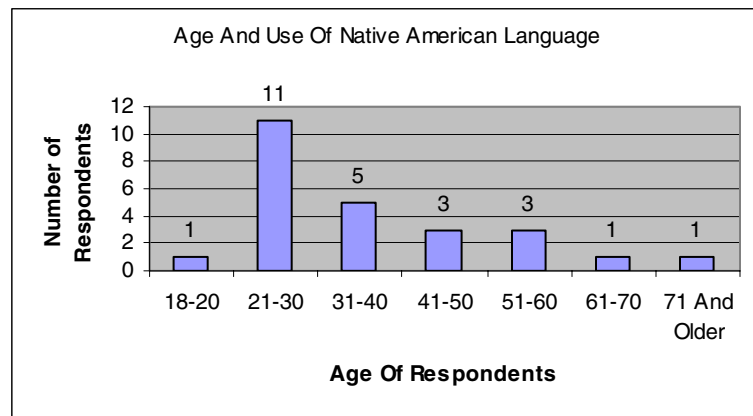


Graph 7: Formal Education Level

A large majority of respondents, 84%, have high school diplomas or GED certificates. A much smaller percentage, 13% of all respondents or 15% of those with high school or equivalent degrees, have a college or higher education degree.

Graph 8: Age and Use of Native American Language

Of the small number of people who answered that they “speak” their Native language, 68% are under the age of forty. This likely reflects active participation in our language program.



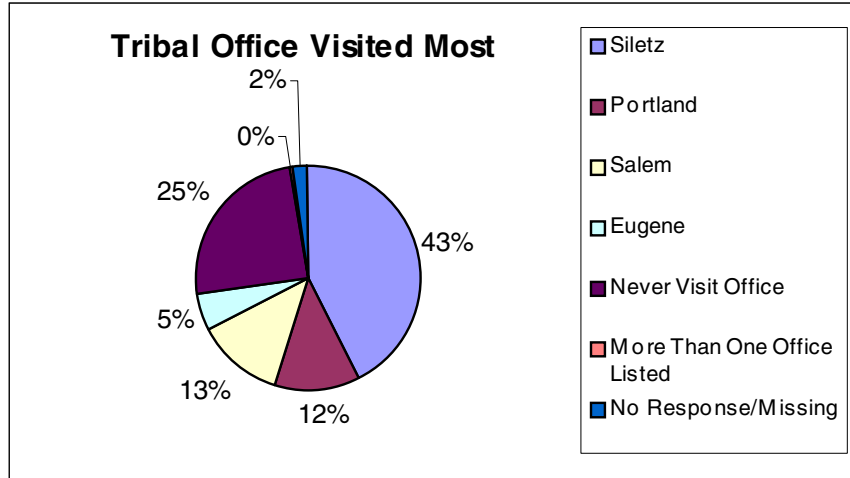
Graph 9: Employment Situation of CTSI Survey Respondents

57% of all respondents indicated that they were employed. 72% of these employed respondents indicated that they work full-time.



Graph 10: Tribal Office Visited Most

The Tribal office visited most is the Siletz office with 43% of respondents reporting they visit the Siletz office most often, followed by Salem at 13%, Portland at 12% and Eugene by 5%. 25% say they never visit an office.



Veterans

The survey returns present a higher than average percentage of veterans within the Siletz tribal member population as compared to the US population as a whole. The responding tribal members' veteran status shows a rate of 15.1%. This rate is higher than the US population rate (11.5%) and the rate for Oregon (13.7%). There were 126 affirmative responses for veteran status within the surveys. This could mean that within the tribe there are approximately 378 veterans (+/- 3%).

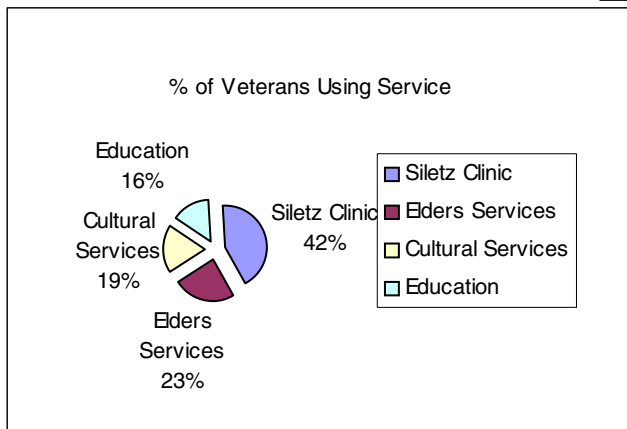
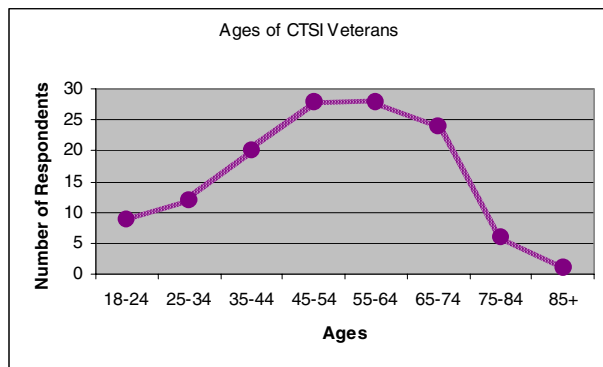
Male	83	66%
Female	42	33%
Single	27	21%
Married or LT partner	93	74%
Widow/er	5	4%
Dependents	65	52%

Table 2: Veterans Statistical Summary

Two-thirds of veterans are men and one-third are women. The large majority (74%) are married or have a long term partner and a slight majority (52%) have dependents.

Graph 11: Ages of CTSI Veterans

Of those respondents who are military veterans 76% of respondents are under the age of 65 and 78% are between the ages of 35-74.



Graph 12: % of Veterans Using Services

Of all CTSI services, more Veterans (42%) report using the Siletz Clinic than any other service. Elders Services (23%), Cultural Services (19%), and Education (16%) were the other services most likely to be used by veterans.



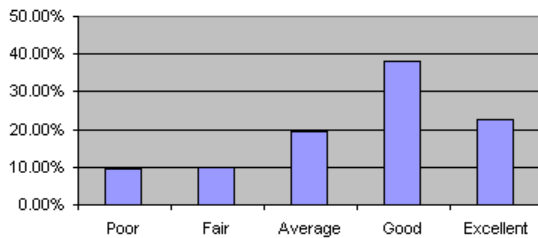


## How did we rate Tribal services?

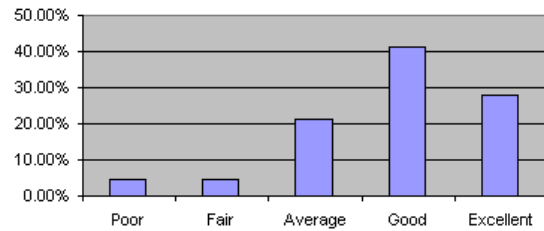
### Bar Charts: Tribal Services

The following charts represent how respondents feel about different services that the Tribe provides its members. On a scale from “Poor” to “Excellent,” the majority of people rated each service “Good” with the exception of the annual Pow Wow, which the majority rated “Excellent.” As with all of the survey data, these graphs have been provided to the appropriate Tribal departments so that they can improve the services they offer. The graphs are included here so that each individual can see how all respondents perceive these services.

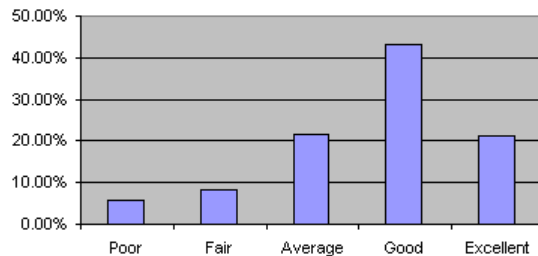
Administration: Siletz Admin



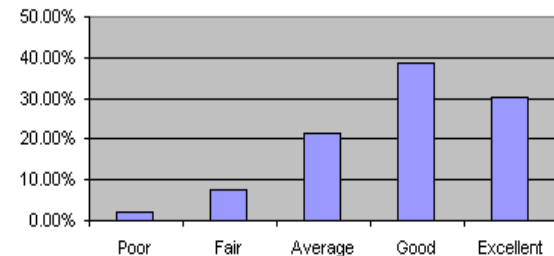
Administration: Portland Office



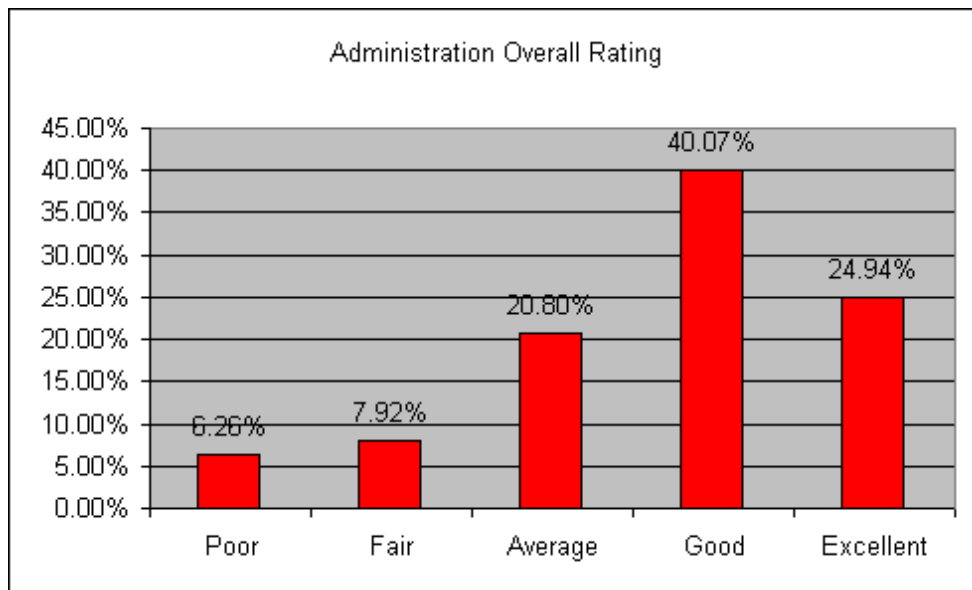
Administration: Salem Office



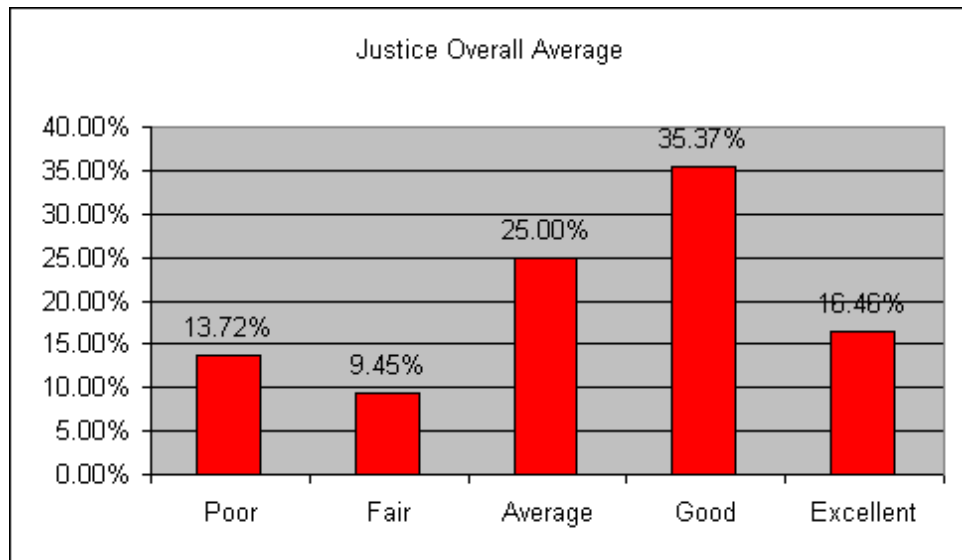
Administration: Eugene Office



Administration Overall Rating



## Tribal Court and Tribal Police



## Education

